

the polemic

Volume III, Number VI

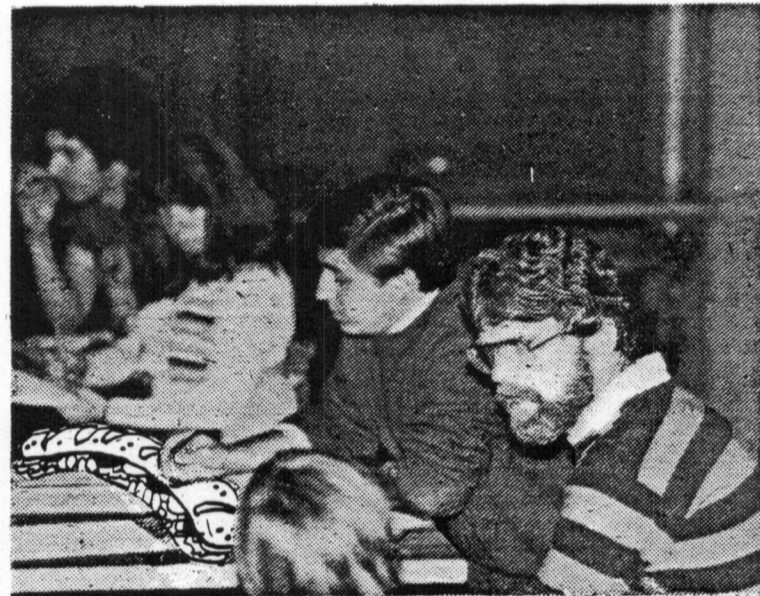
The Pole - Page 17

Rensselaer Polytechnic Institute, Troy, N.Y.

Senate questions tuna sandwich

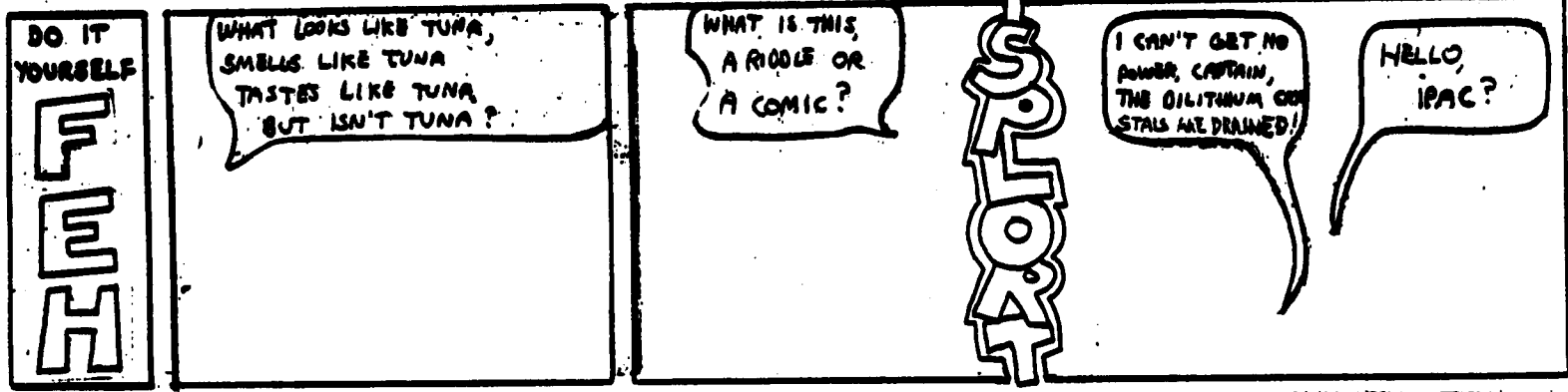
At a recent senate meeting, senate members and observers alike were given the opportunity to ask questions of a lightly salted tuna sandwich, as a result of the senate's condemnations of the sandwich's actions concerning its concession to be made on dark bread rather than the traditional white, without just consulting the Senate for approval. The Daka-made sandwich arrived at the meeting promptly at two o'clock, accompanied by a lettuce leaf, chopped celery and a pickle wedge, and underwent what seemed like an endless scathing interrogation, desperately struggling to remain calm under the incessant barrage of questions and accusations hurled at it by the amassed audience and esteemed Senate members.

The Senate apparently felt that while the tuna sandwich's decision to be constructed on dark bread was not necessarily a poor one, it did feel that it should have been first conferred with regarding the choice. The sandwich refused to comment on this point. Pointing an accusatory finger at the tuna sandwich, Class of '83 senator Gary Marrity exclaimed that the seemingly apathetic nature which the sandwich had adopted seemed to indicate that the sandwich did not, in fact, recognise student input as a means towards an end, and that it did not, in essence, effectively ignore the Student Senate as an entity. Since the



sandwich made no move to rebuke this statement, GM LaPissant took the opportunity to elaborate on Marrity's assertions by noting that the sandwich's irresponsible behavior should result in an immediate suspension from the lunch menu.

The sandwich remained silent throughout the biting reproaches, although it was evident that the questioning was eating away at the sandwich's stamina. The Senate finally abandoned its attempt to grille the tuna sandwich, since it was noted that all efforts to make the sandwich talk had proven fruitless. After much debate, the Senate decided that the sandwich would be allowed to remain on the daka lunch menu, but that it would be banned from all Union functions, as would the pickle wedge, which was found guilty of complicity.



Impotence reigns supreme

In a surprise news conference today, Grand Master Jen Le Post declared the Rensselaer Campus and surrounding areas a sexual disaster area due to the recent wave of impotence continuing to plague most RFI males.

"There est a serious lack of zee arte de amor," stated Le Post. Various theories are circulating around campus as to the origins of this affliction. The most popular theories involve the effects of radioactive fallout, food poisoning from the Tuna Paté' served by Dāka the past two weeks, and a mere moral breakdown among the depraved males of this institution.

The staff of The Polemic, seemingly immune to the plague, ventured forth from Wiltsie House to discover the true origins of this lack of virility (and if possible, prolong it). Searching for local experts on sexual affairs, we went to Russell Sage College.

Stumbling off the Sage campus five hours later, completely exhausted, we realized that the Sage girls had also been unsuccessfully struggling with the problem of frigid males. Even after extensive and exhaustive research we are still without an answer (and IPAC certainly doesn't know - even Stan is baffled). But being the civic-minded souls that we are, we are offering a small public service. For a nominal fee, the Pole staff will service any qualified and suitable sex-starved females. Applications are now being accepted; please send resumé, measurements, and favorite position to The Polemic, 202 Wiltsie House, RFI.

Contest

Fill in the panels in the Fa cartoon above

and return your answer to the Pole office

202 Wiltsie

Winning contributions will be published in a future Pole

Budget policy requires change

In a surprise decision last week, the Union Executive Board (E-Board) announced that hereafter every Union run club or organization will be forbidden from using paper currency in all financial transactions.

Instead, the organizations will be required to use coins of denominations less than fifty cents for paying bills or buying materials. When asked why he proposed this regulation even though paper money is much more convenient and much lighter, Class of '86 E-Board Representative Paul Meiser said, "This new policy is designed to bring about a marked decrease in financial outlays for Union affiliated clubs and organizations." He further expounded on the means by which this policy would bring about its desired effects, saying, "If, for example, the Ski Club desired a tuna sandwich luncheon at a price of approximately \$250.00; then, instead of paying with 5 bills, it would be necessary for them to pay their suppliers with anywhere from 1,000 to 25,000 coin. This would obviously discourage them from having tuna sandwich luncheons, and thus decrease their expenditures."

E-Board proves gay

Ever since the resignation of last year's GM due to lack of time caused by school work (Pete Tapestry has been through enough without our dragging him into this by mentioning his name), all major student government people have been receiving credit for special courses. It is from one of these classes, "Incomprehensible Gibberish for T.A.'s, Jocks, and stu-gov-types", that the E-Board has recently released a startling announcement; everyone is gay.

The proof that followed was a true masterpiece of modern gibberish. "According to Einstein's theory of relativity, the universe must be curved if it is not infinite", the proclamation read, "A straight line that starts at point A will eventually wind up at point A again. It therefore is impossible to have a straight line, to travel a straight line, or to go straight. If it is impossible to go straight then what is left is intuitively obvious." The E-Board statement further revealed, "We have been making probes into this matter ever since last year. We would especially like to thank Lambda Alliance for all their help, and for their delicious tuna buffet."

While it's been known for some time that the E-Board can't think straight, this announcement is a shock to anyone who doesn't know them intimately (and to several who do).

We at the Polemic encourage this attitude for several reasons. Firstly, it will help the GM and PU work together more closely. Secondly, it will give the area sheep a well-deserved rest. As for the E-Board we can only say, keep it up.



PHI SMEGMA SMEGMA SORORITY members spent an arousing weekend rubbing down (and up) the statue of Uncle Sam in downtown Troy. Supposedly, they were attracted by the statue's hardness, but were unable to get a rise out of Uncle Sam. After the encounter the statue was quoted as saying, "Smells like tuna fish!"

need extra tuna

We offer the finest in Tuna

- New Jersey Gorp tuna
- Sahari Sand tuna
- Hudson Sweet tuna

RPI TUNA SERVICE

Our tuna is delivered live within one-half hour or full refund.

If not completely satisfied with your tuna, simply return him/her safely to our refund center in Assyria within 30 days.

*Note--our tuna delivery men carry no more than \$10.00.



Trouble??

Eat Transmissions

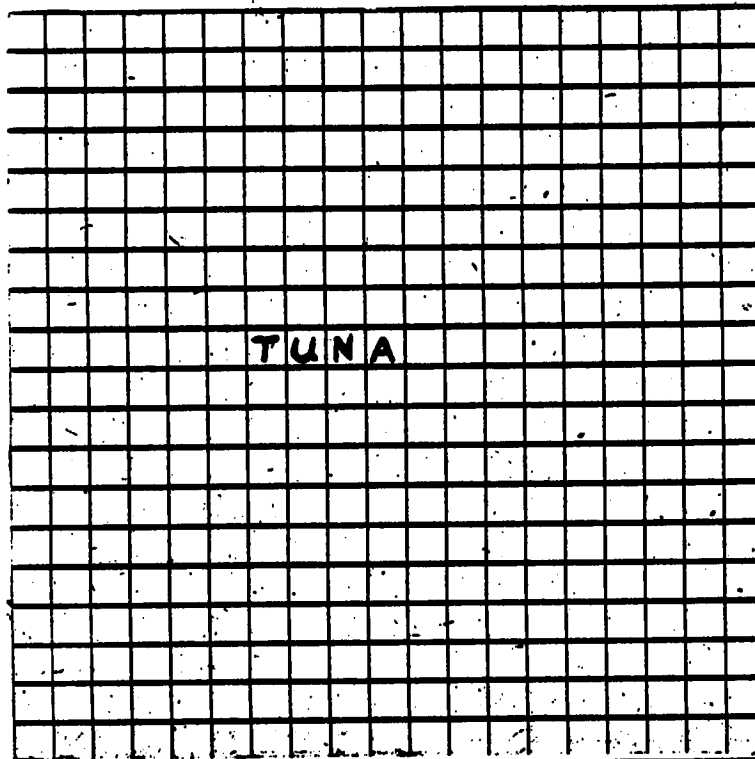
(And Tunafish
Sandwiches)

IT'S YOUR GRID

Yes, you too can create a Poly crossword puzzle. Just follow these simple directions and you'll be on your way.

DIRECTIONS:

1. Make up ambiguous clues and write them in the spaces provided
2. Boxes in the immediate 4 corners of the grid yield triple word score.
3. Score double damage for every "hydrocarbon suffix" clue given; puzzle solver required to roll a saving throw versus insanity.
4. Collect \$200 for passing "GC" and/or including "Summer in France" among the clues.
5. Three of a kind beats two pair (ie. hydrocarbon suffix)
6. Clues given in Swahili must be placed in key locations.
7. Remember: answers to clues need not exist. It just makes the challenge greater for the puzzle solver.
8. Submit, along with the blank grid at right to the Poly; expect immediate acceptance.



Clues

"Martha," Sid Cried, "we've got to get help. If Dave and Jon don't get help soon, they're not going to make it."

"I'm hungry," sighed Martha, "I want lunch."

"Martha, they need help. If they don't get some tunafish fast, they're goners."

"Tunafish," sighed Martha, "That would be nice. A great big sesame seed bun, a couple of pieces of crisp lettuce and tons of tunafish."

"Actually I am a bit hungry," admitted Sid, "Perhaps lunch wouldn't be a bad idea. Maybe a pizza or something."

"PIZZA!" exclaimed Martha, "Oh yummy!"

At that very moment due to something entirely improbable, Sid and Martha went to lunch at a restaurant far away, although really not far at all... Seconds later Dave and Jon awoke, but, Where were they?

Everywhere they looked there were cables and wires and computer chips, and mice (or were they lemmings?).

"Oh no," thought Dave aloud, "We must be inside..."

Quad to slide down hill

The Office of Housing and Residence Life announced last week the hiring of Greene People and Amateurs (GPA), an architectural consulting firm, to study further renovations to the Quadrangle dormitories. GPA, formerly located in Troy, slid down the hill last year into the Hudson, and is now located on a wooden platform in the middle of the river between Troy and Watervliet.

GPA is no stranger to campus, having designed the Folsom Library. It was due to that accomplishment that they were selected. The Institute has long been embarrassed by the fact that the Quad, unlike most every other building on campus, is not sliding down the hill. GPA, which has a habit of sliding down as years pass anyway, has proven its ability at creating unstable designs.

Snyde Peter, director of housing, readily admitted "the Quad is a slime pit!" and added "I wouldn't even eat a tuna sandwich in the place, let alone live there." He did state that student input would be involved in determining the work to be done, mentioning "I've been talking to Lee Wilcox, and the job should be done much sooner than anyone expects."

IT'S YOUR BOD

The navel is a vastly underrated part of the anatomy. This article will enlighten you to the wonderous uses of the bellybutton.

There are two types of navels, "innies" and "outties". These can be used as a measure of sexiness. You're in luck if you (or your partner) is an innie. If you're an outtie, there are a couple of options: create an image of charm rather than sexiness, or join the clergy.

Bellybuttons are wonderful things for contemplation. There are growing numbers of people who contemplate their bellybutton instead of practicing TM. Their belief is that contemplating

this anatomical feature makes one laid back. Hence, they call themselves the navel reserves.

Navels also do wonderful things to bathing suits. Just think how boring the area between the top of the bikini bottoms to the bottom of bikini tops would be without that charming little indentation.

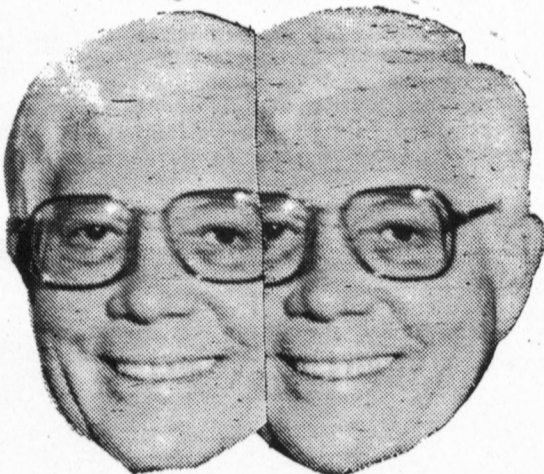
A final note: there are certain things navels were never meant to do. Never put a tuna fish sandwich in your bellybutton, or mistake the bellybutton for something else on your honeymoon night. If those simple guidelines are followed, you can expect many satisfying years of use from your navel.



Hi! I'm JOHN ANDERSON. Do YOU KNOW HOW TIRING AND BORING THESE COLLEGE CIRCUITS ARE ??



LECTURES, SEMINARS AND DISCUSSIONS. JEERS, EGGS, ROTTEN TUNAFISH AND UNCOMPROMISING PICTURES IN CAMPUS HUMOR MAGAZINES.



I THINK I'LL SPLIT.



OHMYGOD!! I SMILED SO MUCH MY FACE BROKE!!

the pole

EDITORIAL SECTION

the polemic

Vol. III, No. VI

Editor in Chief
MKFJGK

Creators
JPMTH

Air to the Throne: GMC

News Editor: MDC

Features Editor: REB

Sports Editor: KJK

Photography Editor: DAG

Composing Editor: DAG

Advertising Manager: GMC

Business Mangler: WMK

Staff: JGS, PJK, PDM, FC, RFS, CLR, KMW

EAM, ALG, SAP, AMO, TUNA

Glue and razor blades thanks to
S&J Variety c/o JB Paper & Neil

Special thanks to CMH

INTERDEPARTMENTAL MEMO:

FROM: Editors
TO: Kitchen Staff

We appreciate the attempts that you have made to cut costs, however, in the future please try to avoid the obviously overpowering allure of 500 tins of tuna on sale, as it leads to the overpowering aroma which now pervades 202 Wiltsie House, the offices of the Polemic.

We as editors, or as a publication, cannot be responsible for these or any other such actions which find their way into the Polemic. Besides do you know how annoyed the Troy Sanitation Department will be when this issue falls into their possession. Our Myron Mail account (care of Polemic) will be so filled with complaints from angry Hudson River dwellers that our readers will not have space to comment. MKFJGK

Top Hat Bottom Hat after math

This past several weeks' events have brought many comments on the appointment of Eddie Knowles as Dean of Students, some bad, some good, but I'd like to tell you what I did after math last Thursday. Let's see, it was a typical Troy day, raining, so I opened up my umbrella before I went outside, just like my mama taught me. It then got stuck in the door. Mama never was too smart. I tried again outside, and it worked much better. After this huge success, I went to the Union, being careful to remove my rubbers before going inside, and went up to my little GM's office. There I did what I always do in my little GM's office: nothing.

After four hard hours of doing nothing I became very hungry, and sent out for a tuna sandwich, which the RPI Tuna Service delivered immediately. While downing my sandwich, I received a phone call from Lee Wilcox warning me about a bad batch of tuna he had eaten at the senate meeting. I thanked him for his concern, and promptly grew nauseous.

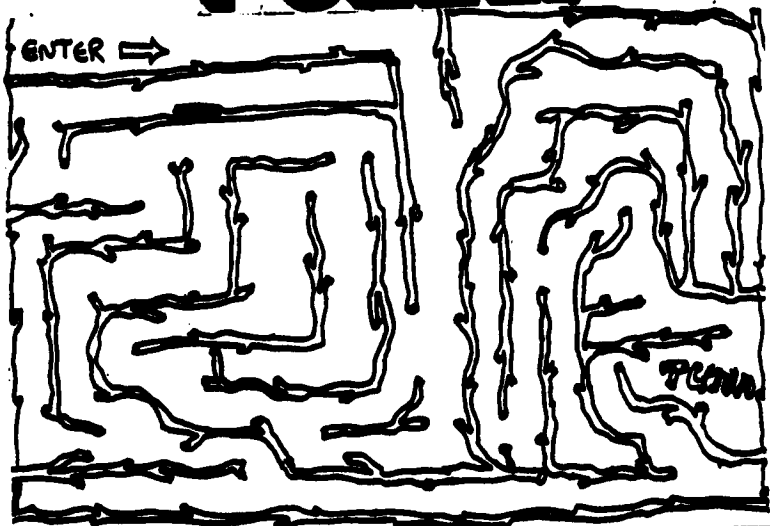
You know, sitting in my little GM office, doing nothing but eating rancid tuna sandwiches, is not a very exciting job. Why did I ever run for this? Why did you elect me? Curse you all, anyway!!

committed

Hi there, I'm your F.U. And speaking of pee-eewee, I've got a dog that smells so bad that when it sits around the house, it SITS AROUND THE HOUSE. And take my E-Board, please! I was talking to the G.M. the other day, what a werdio. He thinks that if you're kinky you use a fin, if you're peverted you use the whole tuna, and if you're really sick you add mayonaisse and have it for a sandwich afterwards (my favorite is Helman's). How many Club Reps. does it take to screw in a light bulb? Ten. Why did the tuna cross the road? It was eaten by the chicken. What do you get when you cross Lee Wilcox with a tuna? I don't know, but they just made it Dean of Students. If you think Daka's cooking is bad you should taste the G.M.'s wife's cooking. Fish never was so bad. And speaking of bad, I've got a girl-friend who...

(continued on page 5)

CROSSWOOD PUZZLE



what? we don't know that!

What? I don't know that!
 "Hello, IPAC." It was the hailing call of probably the most useful service on campus. From where "wherever" is, to what the speed of light is in furlongs per fortnight, IPAC had it on file somewhere. "IPAC Knows Everything" was the catch phrase on campus -- for any puzzle, any bit of obscure off-the-wall trivia, anything at all: "What is the -- Call IPAC!"

If this editorial sounds a bit like an obituary, that's because it is. Oh, IPAC is still around, but only a ghost of it's former self. They still sit in the office, greet you cheerily at the door; you still hear that sunny "hello, IPAC" when you dial 270-6636. But there the facade ends. How many kegs in a metric ton of beer? Drag out the calculator. How many steps are on campus? Better start walking. What was the front page photo on the first ever Polemic? Dig through your back issues. Why does it take four times as long to burn through the cheese side of a Domino's Pizza with a blowtorch than to burn through the crust side? Got a blowtorch? IPAC failed to answer all of these burning questions plaguing RPI, and countless others.

What has brought forth this demise? What awful agent has robbed IPAC of the ability to answer? Was it a diabolical plot on the part of George Low, Lee Wilcox, Eddie Knowles or Anna of the FDH? Was it "Reaganomics"? Was it a Poly error, the loss of Stan, a blown pothead, a tunafish sandwich? We don't know -- Call IP-- oh, that doesn't work anymore. Oh well.

Holiday Inn of Troy, The Albany Hilton,
 and Best Western present:

THE MOTELS

plus
Special Guests

The Turf Inn

Thursday, December 9

at the Cornell School of Hotel Management

Students on sale Tuesday, January 9

at high noon in the Rathskeller

Tuna will be available

committed...

(continued from page 1)

Your PU is experiencing technical difficulties. He will be committed to an institute and will not finish this column.

Rule system to make college debut

In an effort to curb the high rise in violence associated with college hockey, the ECAC has announced today that it has rewritten the rule books for the protection of the players. According to ECAC officials and league referees questioned by the Polemic, the new rules should in no

way whatsoever detract from the flow of play or the excitement of the game itself. To assist the fans in better understanding the new rules, the following is an explanation of the rules and motions the officials will use to denote them.



TRAVELLING - Rotating clenched fists around one another in front of chest. This penalty will be whistled anytime a player attempts to go from one blue line to the other without dribbling the basketball. (2 minute minor)

BASEBALL PLAYING - Holding both hands clenched, one above the other, as if gripping a bat. Baseball playing is prohibited during the game for it crowds the ice with 10 extra players (including the batter) who know nothing about the game of hockey, resulting in injuries to the hockey players as well as baseball players. (game misconduct)



MASTURBATION - A series of stroking motions with the arms as if stimulating "the naughty bits" with inward pulls. Masturbation is prohibited on the ice because it slows down the flow of the game, melts the ice in little spots, and causes riots among the Sagies at the game, who try to storm the ice and partake in the festivities. (Game Misconduct)



HULA HOOP - A series of back and forth motions with both hands accompanied by a swaying of the hips. This ruling prohibits the wearing of hula skirts as well as the act of dancing on the ice, being that these actions have nothing to do with the game of hockey. (2 minute minor)

DISCO DANCING - Either arm extended above the head, followed by John Travolta-type motions customary to disco dancing. Adopted to prohibit the playing of any Bee Gee's music and all disco dancing, for it tends to make the game less exciting while subjecting the players to possible harm from falling mirror balls. (2 minute minor)



HITCH-HIKING - Tapping elbow with one hand while extending the thumb in the direction one wants to travel. Hitch-hiking will not be permitted during the game due to possible injuries resulting from vehicular pile-ups at center ice. (game misconduct)

(continued on page Sandwich)

sports

Stickwomen bark

Ever since their season ended, the Field Hockey team has been barking. The cause of said barking is unknown, but the only sounds emanating from the previously-English speaking women are woofs, arfs, and whimpers.

We may be barking up the wrong tree, but we at the Pole feel that the cause of the stickwomen's howling is their fear that the end of the season will cause the Pole to forget about them. Well, don't worry girls, we'll never stop being ruff on you. And that'sa the name of that tuna.



LAST SATURDAY a vicious twelve-foot tuna attacked the RPI Engineers Football team. Together, a number of the players succeeded in subduing the beast, whose mood was described as indignant, snobbish, and totally malevolent. The tuna's obvious rushing ability prompted Engineer Coach Dave Whitefish to recruit him for the team. Says Whitefish, "He should do well in short-yardage situations."

Tun-a-quote

"MTLLA, BQXLNPR, TUNA WTTJ-KXMKPUW
KSUX WRK KT VR YTNRGPB MKXII GRGVRIM."
-GCIDWC

Rules... (continued from page H)



PINCHING AN INCH - Placing both hands on waist several times and pinching. It is illegal for a player to check how much fat he has on his waist by pinching it, or to eat Special K cereal while engaged in the game of hockey. (2 minute minor)

KARATE CHOPPING - A series of chopping motions with one hand across opposite forearm. No players shall facilitate the use of Karate, Kung Fu, Judo, or any other martial art that can bring harm to an opposing player. (Game Misconduct)



HEART ATTACK - Crossed arms stationary in front of chest as if gasping. Suffering a heart attack while on the ice is prohibited due to the possible injury resulting from players tripping over the body. (5 minute major)

CHECKING THE TIME - Clasp- ing either hand in front of the chest. This rule prohibits players to check the time during the game, since this draws his attention away from the game, and subjects him to possible injury from flying tuna fish thrown by the fans. (2 minute minor)

